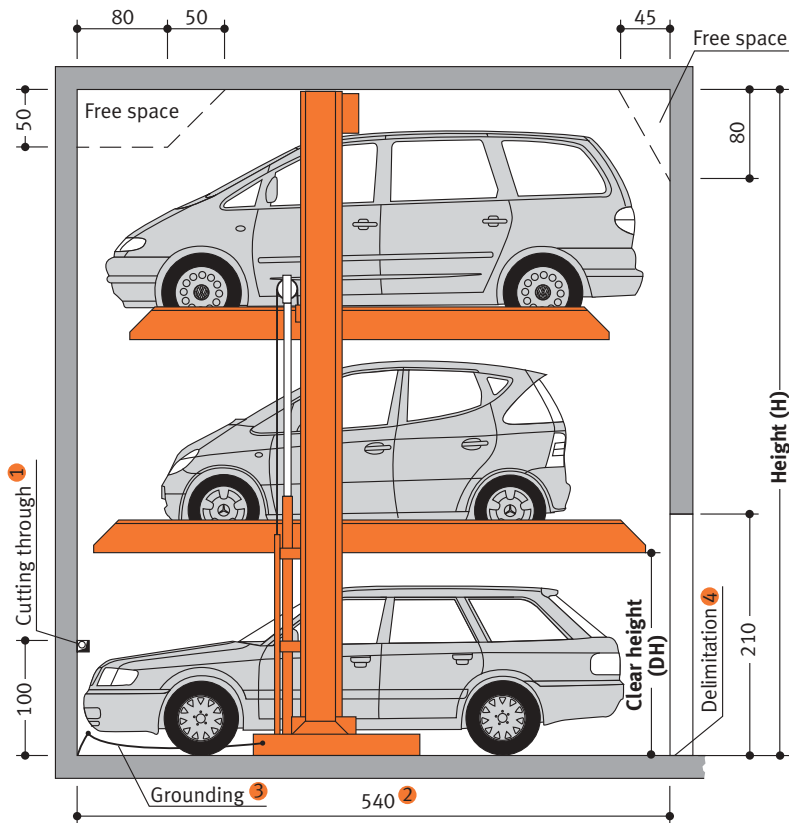
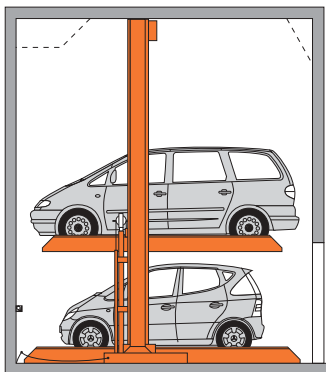


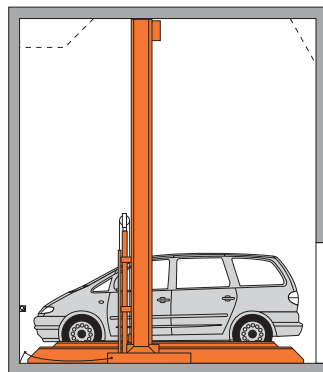
Standard type Trinity 3015-615



Function



Before lowering the platforms, the vehicle parked in the lower parking space must be driven off!



Before lowering the upper platform, the vehicle parked on the lower platform must also be driven off!

Notice

- 1 For dividing walls: cutting through 10 x 10 cm (for pipes).
- 2 If the total length is greater, the max. vehicle length for the lower parking space increases accordingly.
- 3 Potential equalization from foundation grounding connection to system.
- 4 In compliance with prEN 14 010, 10 cm wide yellow-black markings compliant to ISO 3864 must be applied by the customer to the edge of the platform in the entry area to mark the danger zone (see »load plan« page 2).

Trinity 3015



Dimensions:

All space requirements are minimum finished dimensions. Tolerances for space requirements $+3_0$. Dimensions in cm.

EB (single platform) = 2 vehicles

Typ	H	DH*
3015-615	615	185

* = without vehicles

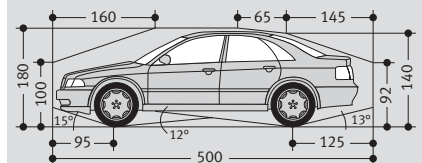
Suitable for:

Standard passenger car and station wagon.
Height and length according to contour.

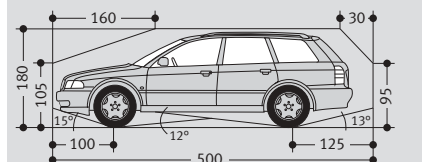
Type	Top	Middle	Bottom
3015-615	180	180	180

width	1,90 m
weight	max. 2000 kg
wheel load	max. 500 kg

Standard passenger car



Standard station wagon



Standard passenger cars are vehicles without any sports options such as spoilers, low-profile tyres etc.

KLAUS

Car Parking Systems

Klaus Auto-Parksysteme GmbH
Hermann-Krum-Straße 2
D-88319 Aitrach

Phone +49-75 65-5 08-0

Fax +49-75 65-5 08-88

E-Mail info@klaus-autopark.de

Internet www.klaus-autopark.de

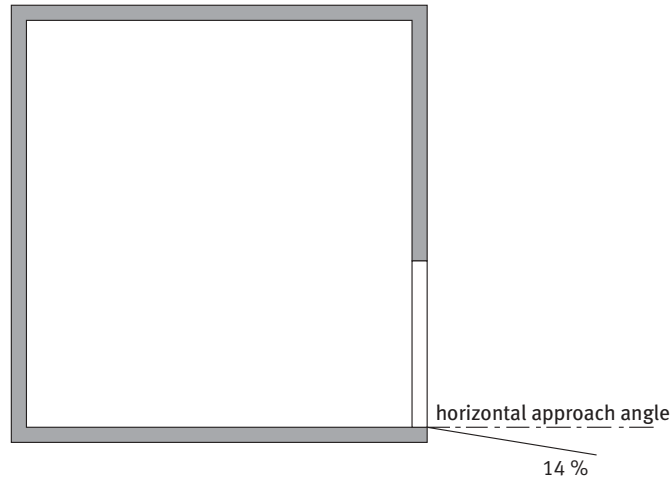
Widths



Clear platform width	B
220 (210*)	250

* = upper platform

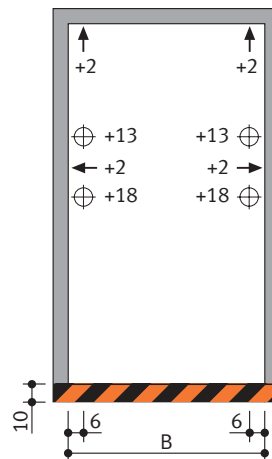
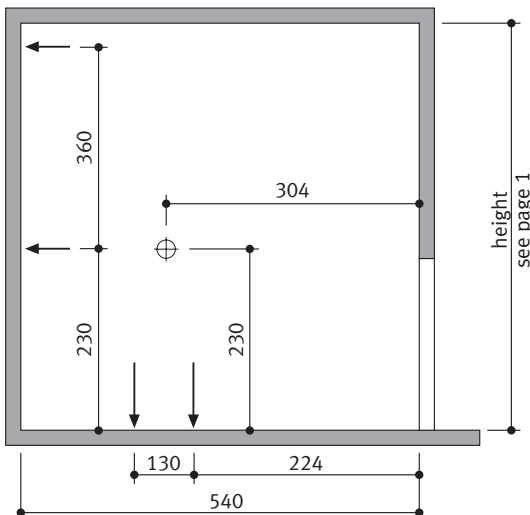
Approach



! The illustrated maximum approach angles must not be exceeded. Incorrect approach angles will cause serious manoeuvring & positioning problems on the parking system for which the local Klaus agency accepts no responsibility.

Load plan

forces in kN



Markings compliant to ISO 3864
(Colors used in this illustration are not ISO 3864 compliant)

! Units are dowelled to the floor. Drilling depths: approx. 15 cm. Material of base plate: concrete (quality minimum B25)!

Electrical data

Generally to be performed by the customer:

- Suitable electrical supply 5 x 2,5 mm² (3 PH + N + PE) per main switch.
- Main fuse 3 x 16 A slow or overcurrent cut-out 3 x 16 A trigger characteristic K, G oder C.
- Lockable main power supply switch (per unit). The position of the switch is defined at the plan evaluation.
- Control wire line 5 x 2,5 mm²

(3 PH + N + PE) from the main switch to the unit.
– Suitable electrical supply to the main switch and the control wire line must be provided by the customer during installation. The functionality can be monitored on site by our fitters together with the electrician. If this cannot be done during installation for some reason for which the customer is responsible,

the customer must commission an electrician at their own expense and risk.

Electrical wiring::

Electrical wiring is carried out by the customer or by the local agency of Klaus in accordance with our circuit diagram/s. (At an extra charge.)

Technical data

Units

Low-noise power units mounted to rubber-bonded-to metal mountings are installed. Nevertheless we recommend that parking system's garage be built separately from the dwelling.

Railings

If there are traffic routes next to or behind the installations, railings compliant to DIN EN 294 must be

installed by the customer. Railings must also be in place during construction.

Available documents

- wall recess plans
- application documents for building license
- maintenance offer/contract
- declaration of conformity
- test sheet on airborne and slid-borne sound

We reserve the right to change this specification without further notice.

The Klaus company reserves the right in the course of technical progress to use newer or other technologies, systems, processes, procedures or standards in the fulfillment of their obligations other than those originally offered provided the customer derives no disadvantage from their so doing.

As in 09.2002